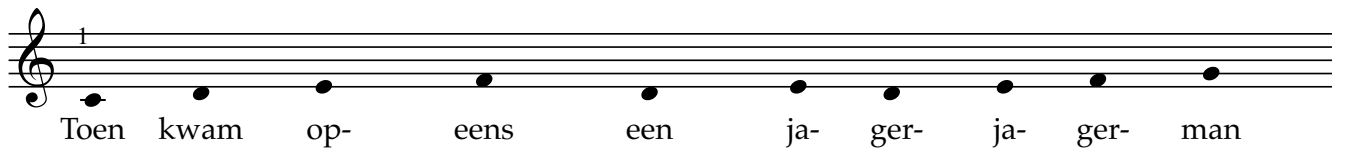
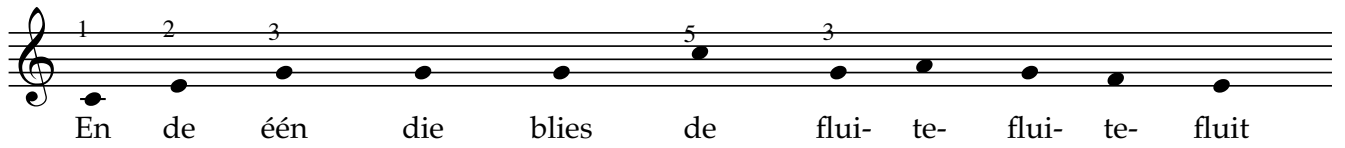
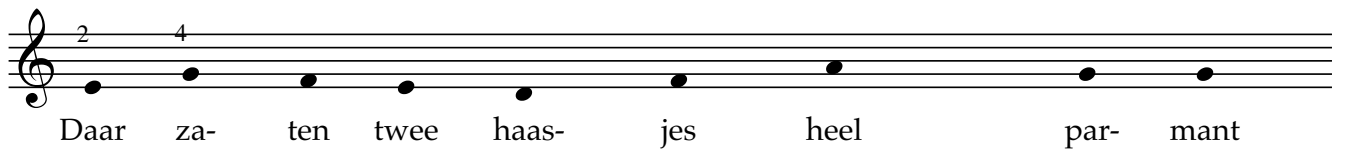
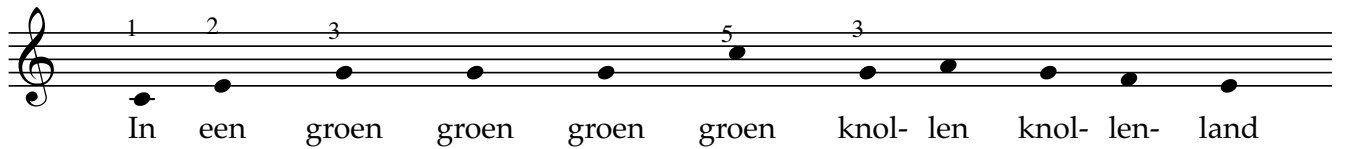


# In een groen groen knollenland



2 3 5 5

En die heeft er één ge- scho- ten

Detailed description: A single musical staff in treble clef. It contains eight notes on a five-line staff. The notes are: G4 (finger 2), A4 (finger 2), B4 (finger 3), C5 (finger 5), D5 (finger 5), E5 (finger 5), F5 (finger 5), and G5 (finger 5). The lyrics are placed below the notes.

1 2 3 5 3

En dat heeft naar men wel den- ken denk- ken kan

Detailed description: A single musical staff in treble clef. It contains ten notes on a five-line staff. The notes are: G4 (finger 1), A4 (finger 2), B4 (finger 3), C5 (finger 5), D5 (finger 3), E5 (finger 3), F5 (finger 3), G5 (finger 3), A5 (finger 3), and B5 (finger 3). The lyrics are placed below the notes.

3

De an- der zeer ver- dro- ten

Detailed description: A single musical staff in treble clef. It contains seven notes on a five-line staff. The notes are: G4 (finger 3), A4 (finger 3), B4 (finger 3), C5 (finger 3), D5 (finger 3), E5 (finger 3), and F5 (finger 3). The lyrics are placed below the notes.

